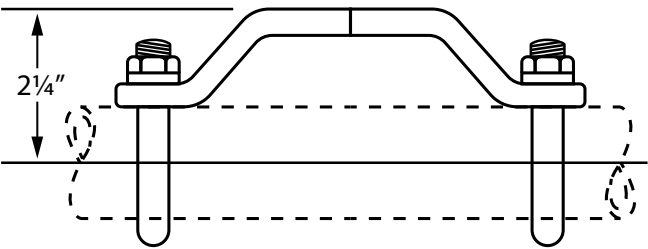
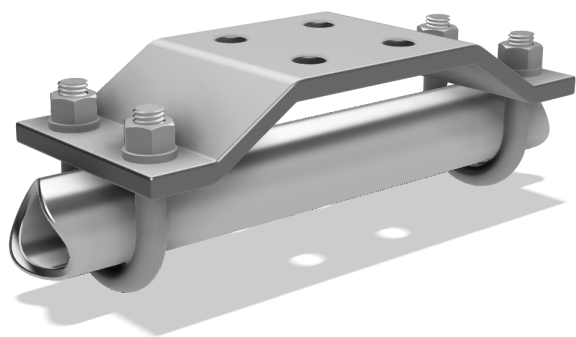


# Bus Support Fittings + Hardware

## Type U 2 U-Bolt - Pipe Mount



Type "U" base for pipe mounting is designed to provide secure, non-slip mounting of the bus support assembly to pipe. Standard base fits pipe sized 1-1/4" S.P.S. Bases available for other pipe sizes. Mounting holes 45° to tubing.

PIPE SIZE S.P.S.	CATALOG NUMBER	BOLT- CIRCLE
1 1/4"	331901	3"
2"	633453	3"

For cross reference or other  
information, please contact us.  
[deltastarcc.com](http://deltastarcc.com)

